

Tordivel as
Storgata 20, N-0184 Oslo, Norway
www.scorpionvision.com



SCORPION ULTRA COMPACT PC

The Scorpion Ultra Compact PC is an industrial reliable fanless industrial PC.



Scorpion Ultra Compact PC with camera and Scorpion Vision Software®.

SCORPION PERFORMANCE INDEX

90-922: 0.16

90-924: 0.56

With i7 second generation: 1.0

LINKS

Scorpion Compact Vision System

Scorpion Vision Apps

Scorpion Basic Datasheet

tordivelblog.com

For more information:

Tordivel AS
Phone +47 2315 8700
Fax +47 2315 8701
office@tordivel.no
www.scorpionvision.com



The Scorpion Ultra Compact PC is certified for Scorpion Vision Software® and is CE compliant accommodating the Windows Operating System. It is a fast and reliable unit with a solid state disk. The PC condenses a complete Scorpion Vision system into the size of a 3.5" hard drive.

PERFECT FOR ROBOT VISION

The complete Scorpion Vision 2D and 3D framework is installed. It can be mounted into a small cabinet in a factory or mounted onto a robot for the best 2D or 3D Robot Vision using one or more Scorpion Stinger cameras.

ROBUST AND RELIABLE

Reliability is another key advantage of the Scorpion Ultra Compact PC. It's fan-less and cable-less mechanical design gives the Scorpion Ultra Compact PC superior durability, while soldered DDR3 memory offers exceptional shock/vibration resistance. The aluminum-extrusion heat sink is cautiously designed to allow a -20°C to 60 °C operating temperature range.

SCORPION PERFORMANCE INDEX FROM 0.16 TO 0.56

Leveraging Intel® Atom™ dual or quad-core processor, the Ultra Compact PC has plenty of processing power for a large range of 2D and 3D machine vision applications. The quad-core is 4x faster than the dual-core unit with a rating of 0.56 on the Scorpion Performance Index. An embedded computer with a second generation Intel i7 CPU is rated to 1.0.

SCORPION ULTRA COMPACT PC

90-924-W8-64BIT-4G

The latest unit has Windows 8.1 64 bit OS, 4G memory and 120 GByte solid state disk.

Scorpion Vision Software® is a registered trademark of Tordivel AS.
© 2014 Tordivel AS

ARTICLES

90-922-W7-32BIT-2G-30G

Scorpion Ultra Compact PC, 2GByte Memory, Windows-7 - 32bit UK, 30GByte SDD, 2 GigE ports, 3 USB ports, 2 serial ports, 149 x 105 x 44 mm

90-924-W8-64BIT-4G-120G

Scorpion Ultra Compact PC, 4GByte Memory, Windows-8 - 64bit UK, 120GByte SDD, 2 GigE ports, 4 USB ports, 2 serial ports, 149 x 105 x 57 mm

See the following pages for a detailed specification of each Ultra Compact PC.



Scorpion Ultra Compact PC 90-922



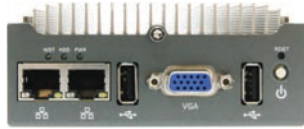
Scorpion Ultra Compact PC 90-924



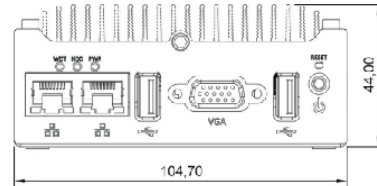
**SCORPION ULTRA COMPACT PC
90-922-W7-32BIT-2G-30G**

PHYSICAL DIMENSIONS

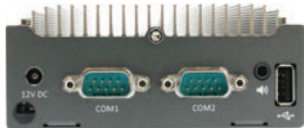
FRONT VIEW



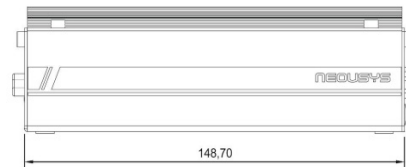
*Front view - 2 GigE ports - 2 USB ports -
monitor output - pwr button*



SIDE VIEW



*Rear view - 12 volt pwr - 2 rs-232 ports - 1
USB port - sound output*

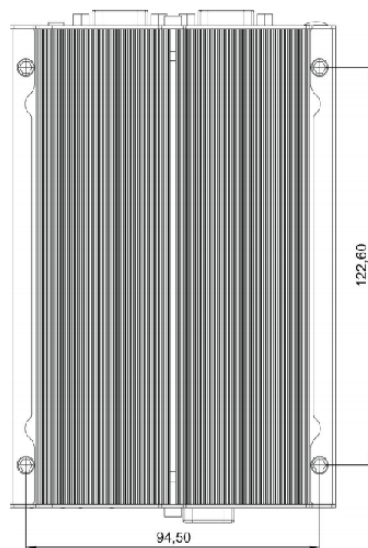


90-922-W7-32BIT-2G-30G

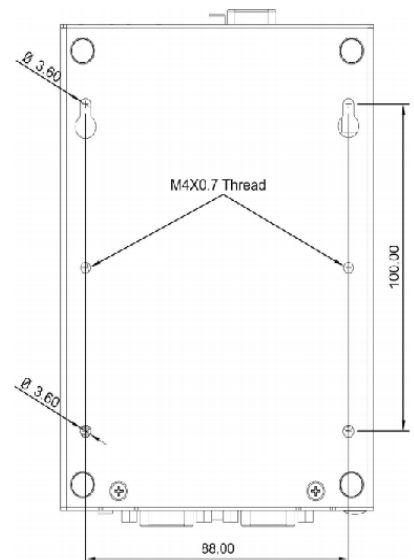
- Intel® Atom™ D525 1.8GHz Dual-core processor
- Rugged, -20 °C to 60 °C fanless operation
- Dual GigaBit Ethernet ports
- One RS-232/422/485 ports and one RS-232 ports
- Two Gigabit Ethernet ports
- Three USB ports
- 2 GByte Memory
- 32 GByte Solid State Disk
- Windows 7 Eng 32 bit OS
- 60W AC/DC power adapter with 12V, 5A DC output
- Mini-PCIe slot with USIM socket
- Versatile mounting design
- Vibration: 5 Grms ; Shock: 50 Grms
- Size: 149mm x 105mm x 44mm
- Weight: 1,0 kg

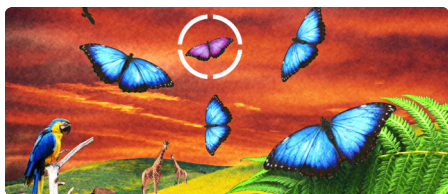
Specifications are subject to change.
Other configurations available upon
request.

TOP VIEW



BOTTOM VIEW





SCORPION ULTRA COMPACT PC 90-924-W8-64BIT-4G-120G

PHYSICAL DIMENSIONS

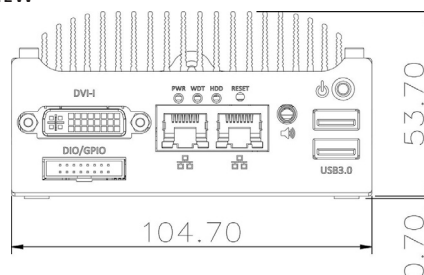


Front view - 2 GigE ports - 2 USB ports - monitor output - power button

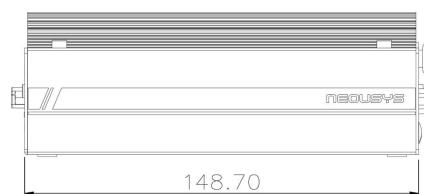


Rear view - 12 volt pwr - 2 rs-232 ports - 2 USB ports - power input

FRONT VIEW



SIDE VIEW

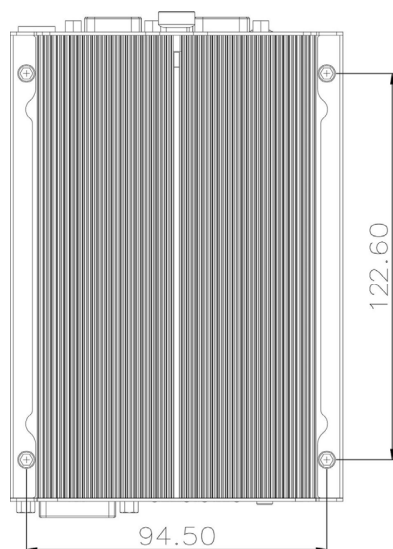


90-924-W8-64BIT-4G-120G

- Intel® Atom™ Bay Trail-I E3845 Quad-core processor
- Rugged, -25 °C to 70 °C fanless operation
- One RS-232/422/485 ports and one RS-232 ports
- Two Gigabit Ethernet ports
- Three USB 3.0 ports
- One USB 2.0 port
- 4 GByte Memory
- 120 GByte Solid State Disk
- Windows 8 Eng 64 bit OS
- 8~32V DC input
- Mini-PCIe slot with USIM socket
- Versatile mounting design
- Vibration: 5 Grms ; Shock: 50 Grms
- Size: 149mm x 105mm x 57mm
- Weight: 1,1 kg

Specifications are subject to change.
Other configurations available upon request.

TOP VIEW



BOTTOM VIEW

